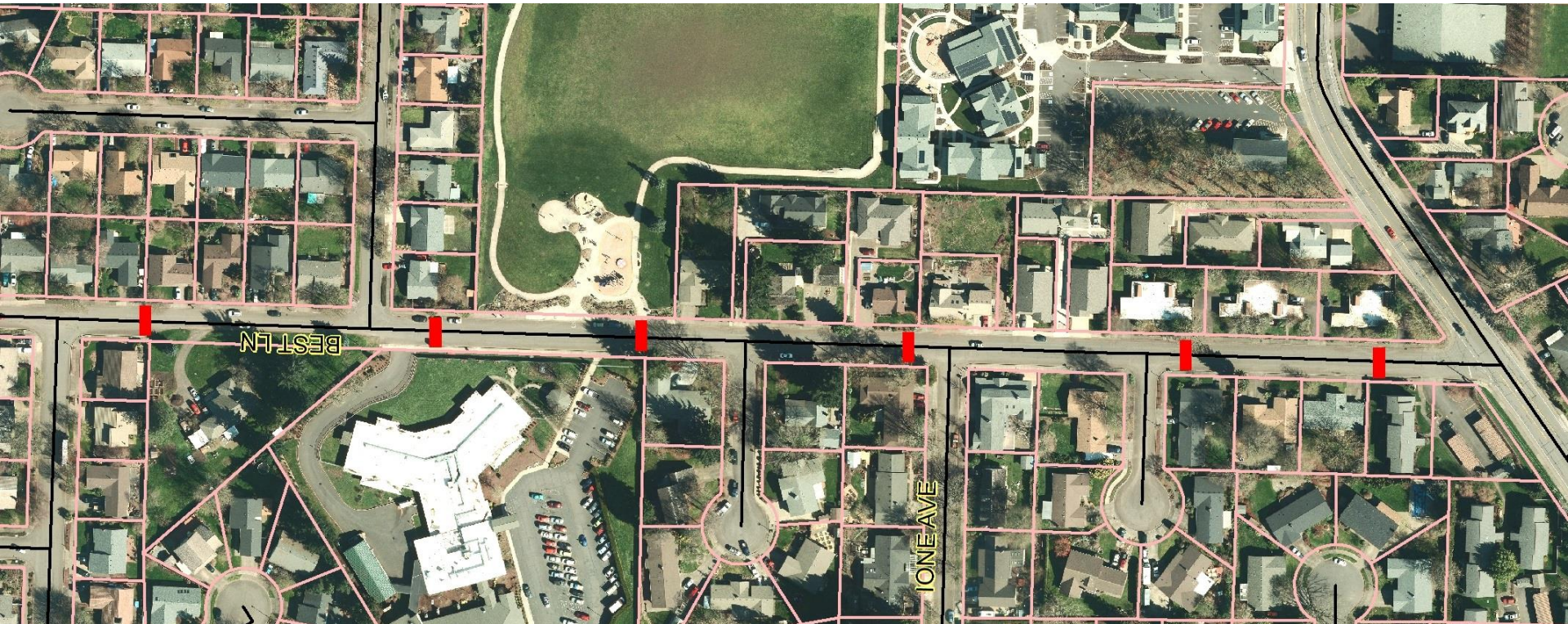


# Best Lane Traffic Calming Speed Cushion Locations



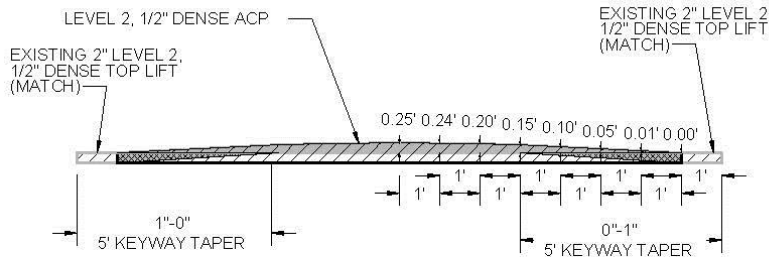
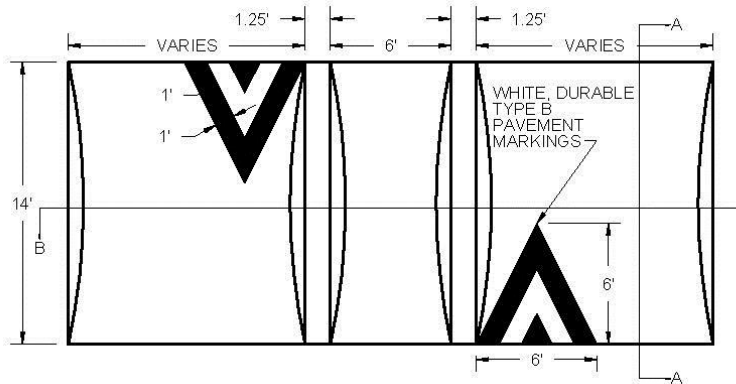
- Speed Cushions:
  - 3-inches high
  - 14-foot long (grooved to allow passage of emergency vehicles and buses)
  - Spaced ~300 feet apart
  - [www.eugene-or.gov/BestLane](http://www.eugene-or.gov/BestLane)

For more information:

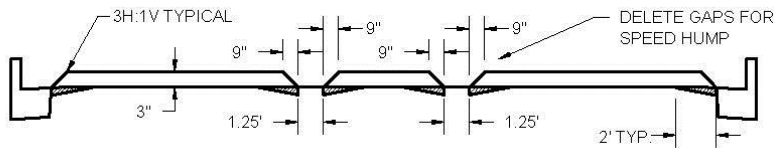
Christopher C. Henry, PE  
Transportation Planning Engineer  
City of Eugene Public Works - Engineering  
99 E Broadway, Suite 400  
Eugene, OR 97401-3174  
541-682-8472  
[chris.c.henry@ci.eugene.or.us](mailto:chris.c.henry@ci.eugene.or.us)



# Speed Cushions Details



SECTION A-A



SECTION B-B  
SPEED CUSHION & SPEED HUMP

Other Contacts

Community Radar Watch Program:  
Harlow Meno, 541-682-8332,  
harlow.b.meno@ci.eugene.or.us

Traffic Enforcement Unit:  
541-682-5157

