

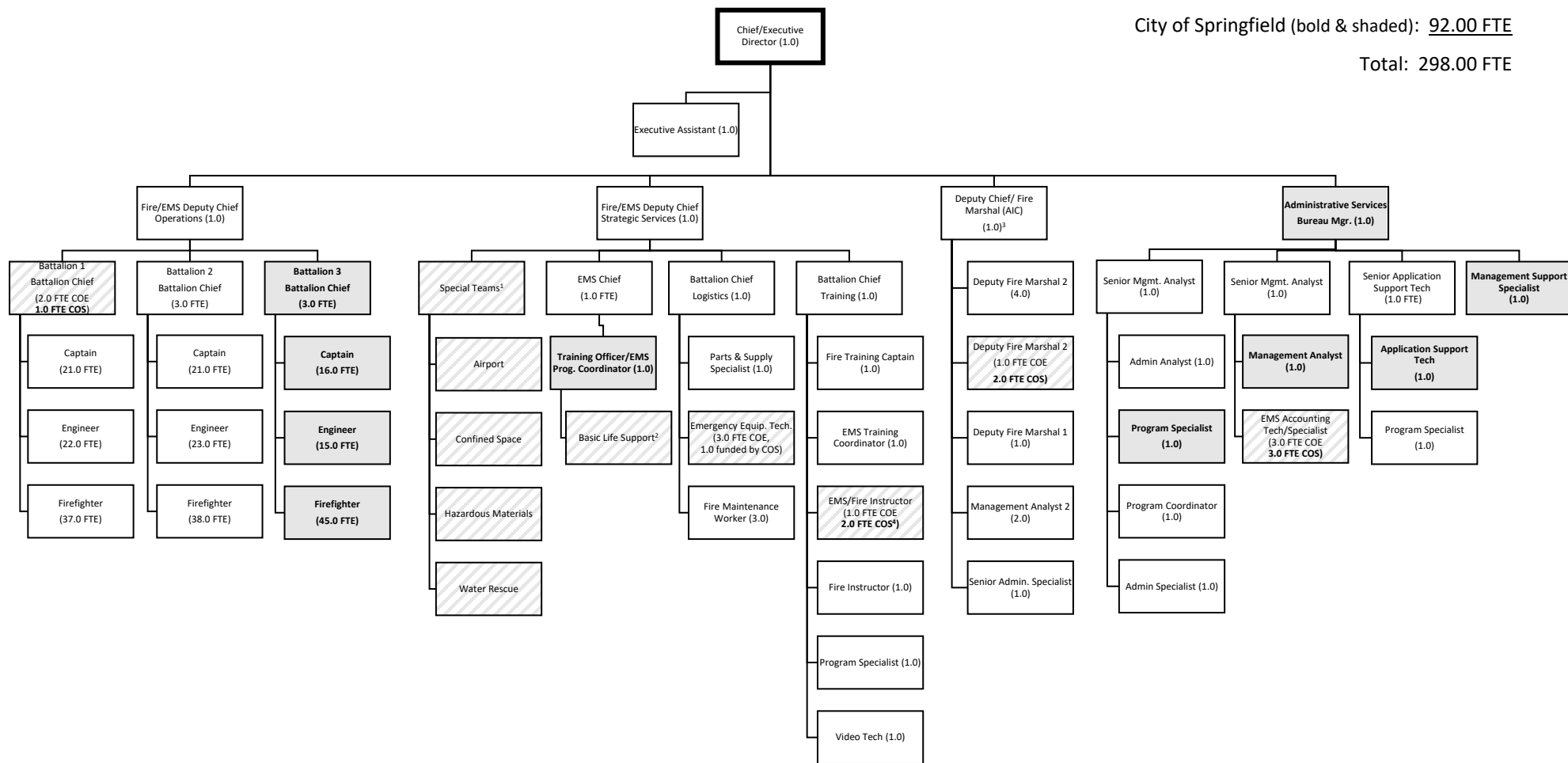
# Eugene Springfield Fire Organizational Chart

FY2021

City of Eugene: 206.00 FTE

City of Springfield (bold & shaded): 92.00 FTE

Total: 298.00 FTE



<sup>1</sup>Special Teams FTE included in Operations.

<sup>2</sup>Basic Life Support personnel are limited duration. ESF employs 24 individuals in this role.

<sup>3</sup>AIC of authorized Assistant Fire Marshal FTE.

<sup>4</sup>1.0 FTE funding eliminated in FY21